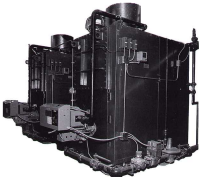




WATER HEATING BOILER FIRED WITH POWER BURNER



H
I
G
H

E
F
F
I
C
I
E
N
C
Y

RITE ENGINEERING AND MANUFACTURING CORPORATION
9441 WASHBURN ROAD, DOWNEY, CALIFORNIA 90242
TEL. (562) 952-2135 • FAX (562) 991-9821

STANDARD EQUIPMENT

- UL LISTED
- CSD-1
- POWER BURNER (GAS, OIL, OR COMBINATION GAS/OIL FIRED)
- HIRSIDE INSPECTION PORTS
- LOW WATER CUTOFF
- HIGH LIMIT CONTROL
- OPERATING CONTROL
- ASME 90# STAMPED
- ASME RELIEF VALVE
- PRESSURE & TEMPERATURE GAUGE
- LIFTING LUGS
- AIR ELIMINATION FITTING
- SEPARATE BOTTOM DRAIN CONNECTION
- BAROMETRIC DAMPER
- ONE (2) MONTH PARTS WARRANTY
- ONE THERMAL SHOCK WARRANTY

OPTIONAL EQUIPMENT (EXTRA COST)

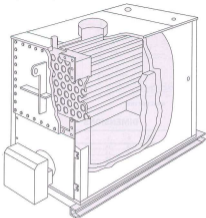
- LEJ, F.M., ML, SPECS., ETC.
- ASME 125, 150 OR 160# STAMPED
- HINGED HEAD PLATES
- INSULATED HEAD PLATES
- HAND HOLES
- EXTERNAL HEAT EXCHANGER MOUNTED PIPED & WIRID COMPLETE WITH CIRCULATING PUMP
- EXPANSION TANK
- COPPER TUBES & ANODES
- INDUCED DRAFT FAN & DRAFT INTERLOCK
- FUE GAS THERMOMETER MOUNTED
- MESSAGE BOILER CONTROLLERS
- LOW NO_x BURNER (See Address Sheet)

GENERAL DATA

MODEL	Input BTU/HR x1000	Output BTU/HR x1000	H.P.	G.P.M.** 20" Rise	G.P.H.** 100" Rise	Water Content Gallons	Furnace Volume (ft ³)	Surface Heating Sq. Ft.	Shipping Wt.
4W"E	460	399	11.9	40	478	33	8	78	2099
5W"E	560	497	13.6	46	549	38	10	99	2399
6W"E	630	623	18.6	62	627	39	12	102	2525
7W"E	760	691	18.8	63	794	44	14	132	2899
8W"E	880	708	21.1	70	884	45	16	133	3299
9W"E	900	747	22.3	73	898	45	18	133	3299
10W"E	1050	872	26	87	1045	56	18	164	3899
12W"E	1200	998	29.7	100	1156	72	21	178	3925
13W"E	1380	1131	33.4	112	1344	77	25	200	4299
15W"E	1500	1245	37.2	124	1483	83	27	224	4599
A15W"E	1500	1245	37.2	124	1483	109	27	233	4675
18W"E	1850	1370	40.9	137	1642	85	30	243	4780
A18W"E	1850	1370	40.9	137	1642	114	30	249	4980
18W"E	1800	1454	44.6	149	1791	95	32	267	5050
A18W"E	1800	1454	44.6	149	1791	118	32	282	5250
20W"E	2000	1460	49.6	166	1920	103	36	298	5575
A20W"E	2000	1460	49.6	166	1920	124	39	304	5775
22W"E	2250	1888	65.8	187	2239	132	42	326	6290
25W"E	2500	2075	62	207	2488	140	46	370	6790
27W"E	2750	2263	68.2	228	2737	150	50	404	7290
30W"E	3000	2450	74.4	249	2986	158	56	435	7825
32W"E	3250	2638	80.8	270	3234	167	62	469	8100
35W"E	3500	2825	86.8	290	3483	175	68	502	8590
37W"E	3750	3113	93	311	3732	184	73	534	8950
40W"E	4000	3300	99.2	332	3981	207	76	563	10099
A40W"E	4000	3300	99.2	332	3981	264	78	585	11299
42W"E	4250	3528	105.4	352	4230	217	78	575	10499
45W"E	4500	3715	111.6	373	4478	228	83	609	10999
A45W"E	4500	3715	111.6	373	4478	292	88	642	12099
47W"E	4750	3943	117.8	394	4727	235	87	649	11399
50W"E	5000	4180	124	415	4976	244	92	675	11800
A50W"E	5000	4150	124	415	4976	314	98	734	12900
55W"E	5500	4565	136.4	456	5474	289	102	748	12790
A55W"E	5500	4565	136.4	456	5474	353	108	808	13890
60W"E	6000	4980	148.8	498	5971	318	112	835	13800
A60W"E	6000	4980	148.8	498	5971	393	118	877	14790
65W"E	6500	5395	161.2	539	6469	351	120	879	14890
A65W"E	6500	5395	161.2	539	6469	429	128	951	15890
70W"E	7000	5810	173.6	580	6967	375	130	980	16290
A70W"E	7000	5810	173.6	580	6967	452	138	1021	18890
75W"E	7500	6225	186.0	622	7464	393	140	1031	17900
A75W"E	7500	6225	186.0	622	7464	441	148	1077	17400
80W"E	8000	6732	208.3	673	7961	408	149	1183	22200
A80W"E	8000	6732	208.3	673	7961	444	155	1232	23200
100W"E	10500	8715	260.4	871	10450	583	241	1482	24500
115W"E	11800	9645	285.2	964	11450	612	267	1631	26600
125W"E	12500	10375	310.0	1037	12440	661	292	1789	27400

** ADD Ⓢ for gas fired, Ⓜ for oil fired, Ⓞ for combination gas, oil fired, Ⓞ for natural & LP gas fired.

** Pressure drop for all models is less than 3 feet of water, or 1.3 psi.



WARRANTY: RITE Engineering and Manufacturing Corporation warrants boilers of its manufacture and bearing its nameplate, when not misused or neglected, to be free from defects in workmanship or material. The company's obligation under this warranty is limited to repairing or replacing at its factory any device or part thereof which shall, within one year after delivery to the original purchaser, be returned to the factory, transportation charges prepaid, and which on examination shall prove to have been defective. The company assumes no liability for consequential damages of any kind; the purchaser by acceptance of this equipment shall assume all liability for the consequences of its use or misuse by the purchaser, his employees, or others. A defect in the meaning of this warranty, in any part of said equipment, shall not, when such part is capable of being repaired or replaced, operate to condemn such equipment. This warranty is expressly in lieu of other warranties, obligations or liabilities, expressed or implied by the company or its representatives. All statutory or implied warranties, other than this, are hereby expressly negated and excluded.