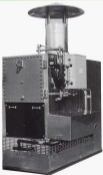




**OUTDOOR STEAM BOILERS
150 PSI HIGH PRESSURE
ATMOSPHERIC NATURAL GAS FIRED**



**O
U
T
D
O
O
R

B
O
I
L
E
R
S**

RITE ENGINEERING AND MANUFACTURING CORPORATION
9441 WASHBURN ROAD, DOWNEY, CALIFORNIA 90242
TEL. (562) 862-2135 • FAX (562) 891-6821

STANDARD EQUIPMENT

- AS U.S.D.
- CSD-1
- WMT 100# STAMPED
- 4 SECTIONS 8" OR 10" TIGHT-FLAME SAFEGUARD CONTROL
- GAUGE GLASS, BLOWDOWN & PRESSURE GAUGE
- FRONT & REAR WHEELS (BOTH COILS ON OPENINGS)
- FRONT & REAR SURFACE BLOWDOWN OPENINGS
- FRONT & REAR BOTTOM BLOWDOWN OPENINGS
- TWO 100# WATER COCKETS
- ELECTRIC IGNITION
- FIBERGLASS INSULATION
- LOW-NOISE-LOW VIBRATION
- PREPARED GAS TRAIN APPLICATOR
- PUMP START CONTROL
- RELIEF VALVE
- LOW-NOISE CONTROL
- FACTORY WELD TESTED
- HIGH PRESSURE HIGH TEMPERATURE HOT WATER BOILERS
- MADE IN U.S.A.
- OTHER LISTS

OPTIONAL EQUIPMENT (EXTRA COST)

- 4 LIGHT PANEL (SEE LIST)
- MULTI-STAGE BOILER CONTROLLER
- U.S.L., F.M.I., M.L. SPICKS, ETC.
- MODULARIZATION FINISH
- FINISHED HEAD PLATES
- INSULATED HEAD PLATES
- MAKE-UP SYSTEM
- BLOWDOWN TANK
- 300 MOUNTED PACKAGES
- WORKING PRESSURES OVER 150 PSI

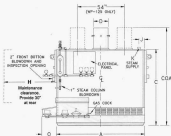
GENERAL DATA

MODEL	Input BTU/HR (x1000)	Output BTU/HR (x1000)	Steam Pressure	# Steam per Hour	Heating Surface Sq. Ft.	Water Content Gallons	Approx. Shipping Wt.
WP-0.5	208	218	5.0	328	65	24	2400
WP-1.0	415	435	1.0	645	88	24	2400
WP-1.5	622	652	1.5	972	88	28	2600
WP-2.0	830	870	2.0	1290	108	42	2800
WP-2.5	1038	1112	2.5	1615	115	45	2800
WP-3.0	1245	1372	3.0	1940	134	62	4000
WP-3.5	1452	1588	3.5	2265	144	68	4000
WP-4.0	1660	1774	4.0	2590	164	68	4000
WP-5.0	2075	2212	5.0	3238	190	108	5000
WP-6.0	2490	2648	6.0	3885	216	127	5800
WP-7.5	3113	3364	7.5	4913	271	138	12000

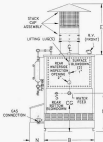
OUTDOOR

Rite

HIGH PRESSURE STEAM BOILERS - ATMOSPHERIC GAS FIRED



RIGHT SIDE VIEW



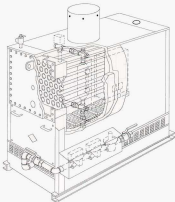
REAR VIEW

DIMENSIONS

MODEL	A	B	D	ORA*	OS	P	Q	R	S	T	J	K	L	M	O	W
WP-6-E	44	21	88	97	58	9	34	44	32	1 1/4	3 1/4	2 1/4	1	27	23	1
WP-20	44	21	88	97	58	9	34	44	32	1 1/4	3 1/4	2 1/4	1	27	23	1
WP-23	54	21	88	99	59	10	36	44	42	1 1/4	3 1/4	2 1/4	1	27	25	1
WP-30	64	21	88	100	59	12	38	44	52	1 1/4	3 1/4	2 1/4	1	27	25	1
WP-35	56	29	92	104	59	14	41	44	38	2 1/4	4 1/4	2 1/4	1	27	27	1 1/4
WP-35	79	29	92	107	59	14	45	44	50	2 1/4	4 1/4	2 1/4	1	27	27	1 1/4
WP-48	88	29	92	109	59	14	45	44	73	2 1/4	4 1/4	2 1/4	1	27	27	1 1/4
WP-60	96	29	92	109	59	14	45	44	73	2 1/4	4 1/4	2 1/4	1	27	27	1 1/4
WP-75	88	33	98	114	64	12	48	44	68	3	4 1/4	3	1 1/4	27	29	1 1/4
WP-100	111	33	98	117	64	14	48	44	92	3	4 1/4	3	1 1/4	29	29	1 1/4
WP-125	131	33	98	118	64	(2) 20	47	44	113	3	4 1/4	3	1 1/4	29	29	1 1/4

*May be lower for shipping and the difference added to the stack cap. "W" dimension will not change.

All dimensions in inches, subject to change without notice.



WARRANTY: RITE Engineering and Manufacturing Corporation warrants boilers of its manufacture and bearing its nameplate, when not misused or neglected, to be free from defects in workmanship or material. The company's obligation under this warranty is limited to repairing or replacing at its factory any device or part thereof which shall, within one year after delivery to the original purchaser, be returned to the factory, transportation charges prepaid, and which on examination shall prove to have been defective. The company assumes no liability for consequential damages of any kind; the purchaser by acceptance of this equipment shall assume all liability for the consequences of its use or misuse by the purchaser, his employees, or others. A defect in the meaning of this warranty, in any part of said equipment, shall not, when such part is capable of being repaired or replaced, operate to condemn such equipment. This warranty is expressly in lieu of other warranties, obligations or liabilities, expressed or implied by the company or its representatives. All statutory or implied warranties, other than title, are hereby expressly negated and excluded.