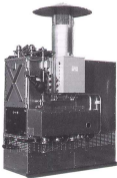


Rite

BOILERS

OUTDOOR STEAM BOILERS
15 PSI LOW PRESSURE
ATMOSPHERIC NATURAL GAS FIRED



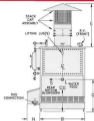
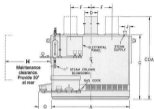
RITE ENGINEERING AND MANUFACTURING CORPORATION
9441 WASHBURN ROAD, DOWNEY, CALIFORNIA 90242
TEL. (562) 692-2135 • FAX (562) 651-6621

**O
U
T
D
O
O
R

B
O
I
L
E
R
S**

OUTDOOR

15 PSI STEAM BOILERS - ATMOSPHERIC GAS FIRED

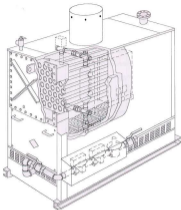


DIMENSIONS

MODEL	A	B	C	CGA*	CG	D	E	F	G	H	I	L	M	N	O
W1400	47	28	72	88	82	8	180	0	41	82	0	1.56	1.8	22	1
W1500	52	35	78	96	92	10	180	0	41	87	0	1.56	1.8	22	1
W1600	58	38	72	81	82	10	180	0	41	82	0	1.56	1.8	22	1
W1700	64	38	72	88	82	10	180	0	41	80	0	1.56	1.8	22	1
W1800	68	32	78	88	87	12	180	0	41	79	48	1.56	1.7	21	1.54
W1900	69	32	78	88	87	14	180	0	41	78	48	1.56	1.7	21	1.54
W1000	68	32	78	104	87	14	180	0	41	78	48	1.56	1.7	21	1.54
W1100	73	32	78	104	87	14	180	0	41	81	48	1.56	1.7	21	1.54
W1200	77	32	78	104	87	16	180	0	41	87	48	1.56	1.7	21	1.54
W1300	83	32	78	104	87	16	180	0	41	84	48	1.56	1.7	21	1.54
W14000	69	42	84	120	88	10	187	0	41	87	88	2	1.8	23	1.56
W15000	69	38	78	104	87	10	186	0	41	86	48	1.56	1.7	21	1.54
W16000	73	42	84	120	88	10	187	0	41	81	88	2	1.8	23	1.56
W17000	69	32	78	88	87	(2) 14	184	18	41	88	48	1.56	1.7	21	1.54
W18000	79	42	84	120	88	10	189	0	41	88	88	2	1.8	23	1.56
W19000	100	32	78	104	87	(2) 14	188	20	41	73	48	1.56	1.7	21	1.54
W20000	83	42	84	124	88	10	188	0	41	82	88	2	1.8	23	1.56
W21000	87	42	84	124	88	10	188	0	41	84	88	2	1.8	23	1.56
W22000	93	42	84	124	88	10	188	0	41	92	88	2	1.8	23	1.56
W23000	66	42	84	120	88	(2) 14	187	18	41	88	88	2	1.8	23	1.56
W24000	105	42	84	120	88	(2) 14	187	18	41	74	88	2	1.8	23	1.56
W25000	121	42	84	120	88	(2) 14	187	21	41	88	88	2	1.8	23	1.56
W1800	107	42	84	124	88	(2) 14	188	18	41	88	88	2	1.8	23	1.56
W1900	109	42	84	124	88	(2) 14	188	18	41	92	88	2	1.8	23	1.56
W2000	109	42	84	124	88	(2) 14	188	18	41	92	88	2	1.8	23	1.56
W2100	107	42	84	124	88	(2) 14	188	18	41	78	88	2	1.8	23	1.56
W2200	107	42	84	124	88	(2) 14	188	18	41	78	88	2	1.8	23	1.56
W2300	121	42	84	124	88	(2) 14	188	21	41	78	88	2	1.8	23	1.56
W1900	128	42	84	124	88	(2) 14	188	22	41	84	88	2	1.8	23	1.56

*May be lower for shipping and the difference added to the stack cap. If dimensions will not change

All dimensions in inches. Subject to change without notice. PL - Flange



WARRANTY: RITE Engineering and Manufacturing Corporation warrants boilers of its manufacture and bearing its nameplate, when not misused or neglected, to be free from defects in workmanship or material. The company's obligation under this warranty is limited to repairing or replacing, at its factory any device or part thereof which shall, within one year after delivery to the original purchaser, be returned to the factory, transportation charges prepaid, and which on examination shall prove to have been defective. The company assumes no liability for consequential damages of any kind; the purchaser by acceptance of this equipment shall assume all liability for the consequences of its use or misuse by the purchaser, his employees, or others. A defect in the meaning of this warranty, in any part of said equipment, shall not, when such part is capable of being repaired or replaced, operate to condemn such equipment. This warranty is expressly in lieu of other warranties, obligations or liabilities, expressed or implied by the company or its representatives. All statutory or implied warranties, other than title, are hereby expressly negated and excluded.