



Outdoor 150 PSI High Pressure Steam Boilers Atmospheric / Natural Gas Fired

PRODUCT DESCRIPTION

Rite Atmospheric Natural Gas Fired High Pressure Steam Boilers have been providing our valued customers with high quality steam safely and reliably for over forty years. From autoclaves to medical centers, food processing to industrial process manufacturing – these heavy-duty watertube steamers are available in 16 different models, ranging from 398 – 5,230 MBH input (9.5 – 125 Boiler Horsepower) for the widest selection possible.

So simple to maintain and operate, Rite Steam Boilers feature **complete waterside access** so that virtually all scale and mud deposits can be seen and mechanically cleaned during a single scheduled maintenance shutdown. The result – **Better fuel-to-steam efficiency and lower operating cost over the life of your boiler investment.** Consider a few of our other standard features: Rite's floating heads that eliminate pressure vessel cracks and broken welds caused by thermal stress cycling (backed by our **25 Year Thermal Shock Warranty**), Rite's "superheated" drying tubes that regularly boost steam quality at the nozzle into the 99%+ range, Rite's cast iron burners for whisper quiet operation and you have a better boiler by design.



Outdoor Panels Removed!





Outdoor High Pressure Steam Boilers / Atmospheric 150 PSI Models & Ratings / Natural Gas Fired

STACK / DRAFT REQUIREMENTS

- UL listed for use with Type B Vent.
- Minimum stack height including Draft Control is 10 feet.
- The stack should be supported independently of the boiler and an adjustable length section of stack should be installed after the draft control to allow for future separation. All Rite Boilers have internal stack supports to handle the weight of the stack during installation.
- Boilers should draft between $-.05"$ to $-.09"$ W.C. when firing.
- A draft gauge is installed on all boilers.

AIR REQUIREMENTS

Adequate Combustion/Ventilation Air is vital for safe, efficient operation. Refer to the latest edition of the Uniform Mechanical Code or consult your local Building and Safety Department for specific requirements.

Warning: Do not install in a room that will develop negative pressure without utilizing a properly sized induced draft fan.

ELECTRICAL REQUIREMENTS

- A 120/60/1 15 amp supply is required to boiler-burner circuit.
- Separate electrical supply may be required to operate boiler feed pump.

NATURAL GAS SUPPLY REQUIREMENTS

(STATIC AND AT FLOW)

- Models WP9.5 - WP15 6" w.c. min. to 14" w.c. max.
 - Models WP20 - WP75 7" w.c. min. to 28" w.c. max.
 - Model WP100 8" w.c. min. to 28" w.c. max.
 - Model WP125 15" w.c. min. to 28" w.c. max.
 - For other gas pressures, consult factory or your Rite Representative.
- *Propane Supply Requirements: 11" w.c. min. to 14" w.c.

ELEVATION DERATION

Ratings given below are for elevations up to 2000 feet. Above 2000 feet, ratings should be reduced at the rate of 4% for every 1000 feet above sea level.

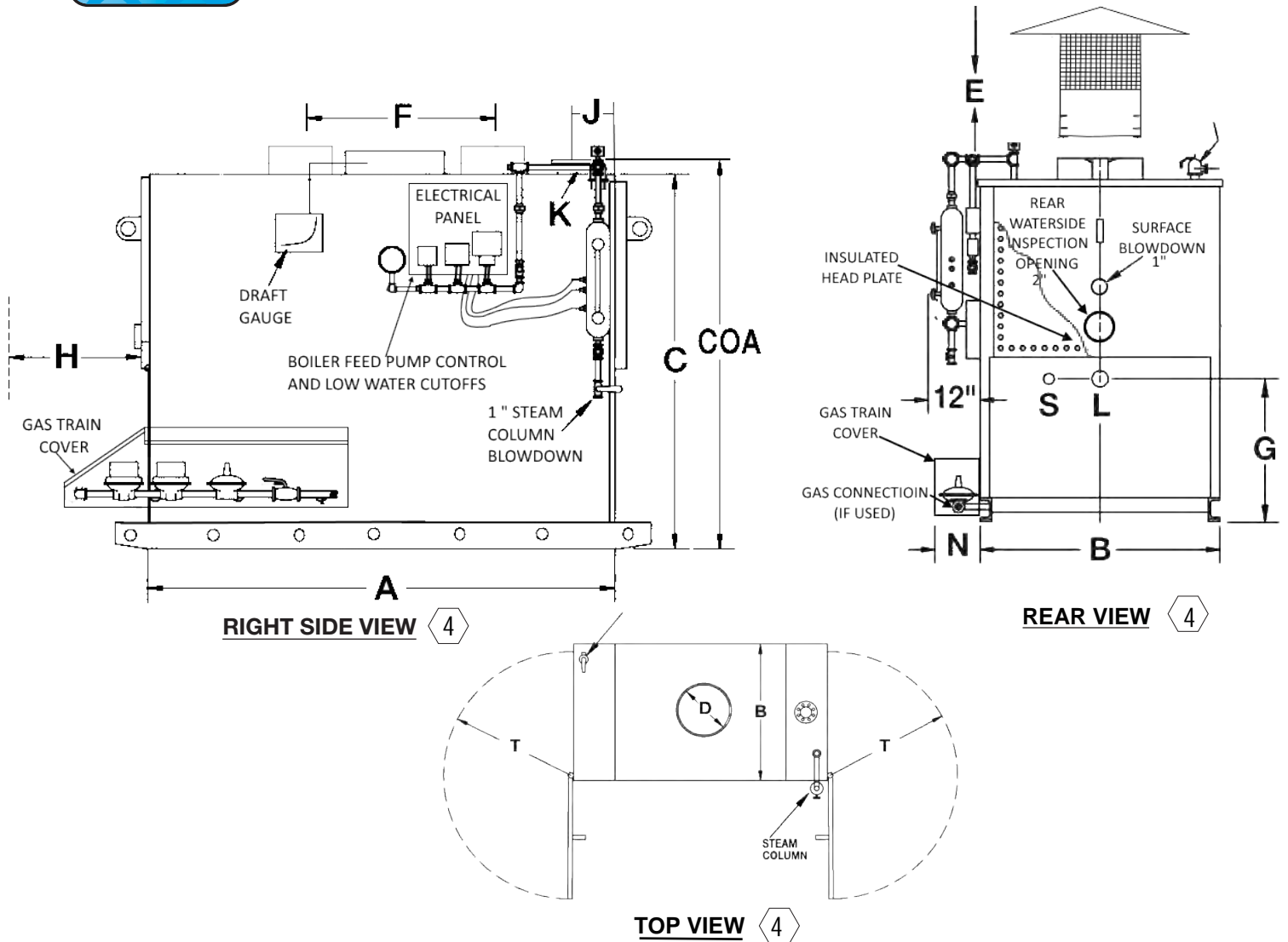
FEEDWATER SYSTEMS & BLOWDOWN TANKS

Rite manufactures a complete line of Condensate Return Feedwater Tanks and Blowdown Tanks for our Steam Boilers shown below.

BOILER MODEL	Input MBH	Nominal Output		Heating Surface Sq. Ft.	Water Content Gallons	Pounds of Steam per Hour @ 212 F	Nominal Shipping Weight (lbs)
		MBH	Boiler Horsepower				
WP9.5	398	318	9.5	65	35	328	2430
WP10	419	335	10	65	35	345	2430
WP15	628	502	15	85	40	518	2660
WP20	838	670	20	105	45	690	2890
WP25	1046	837	25	115	65	863	3840
WP35	1465	1172	35	156	85	1208	4320
WP48	1950	1560	48	214	100	1656	4930
WP50	2093	1674	50	214	100	1725	4930
WP75	3139	2511	75	349	15	2588	8900
WP100	4185	3348	100	460	175	3450	10100
WP125	5230	4184	125	571	195	4313	11700



Outdoor High Pressure Steam Boilers / Atmospheric 150 PSI Models & Dimensions / Natural Gas Fired



- (2) May vary - sizes shown are for UL gas trains at standard supply pressures. Gas connections are male NPT pipe thread. All other threaded connections are female NPT.
 (3) 1-1/2" and 2-1/2" connections are Female NPT. 4" and 6" flanges are ANSI 300 lb. SA-105 raised face. Flanged outlets may be reduced upon special request and/or supplied ANSI 150 lb SA-105 raised face.
 (4) Standard right hand construction shown illustrated above. Left hand construction available at no extra charge.
 (5) "T" dimension required only when hinged headplates are optionally supplied.

BOILER MODEL	A	B	C	COA	D	F	H	J(2)	K(3)	L	N	S	T(5)
	Length Jacket	Width Jacket	Height Flush	Height Overall	Stack Dia.	Twin Stacks	Tube Maint.	Gas Conn.	Steam Supply	Feed Water	Side Space	Blow Down	Head Swing
WP9.5	44	31	80	97	9	-	32	3/4	1 1/2	1	12	1	24
WP10	44	31	80	97	9	-	32	3/4	1 1/2	1	12	1	24
WP15	54	31	80	99	10	-	42	1	1 1/2	1	12	1	24
WP20	64	31	80	102	12	-	52	1	1 1/2	1	12	1	24
WP25	56	39	81	104	14	-	39	1	2 1/2	1	12	1 1/2	32
WP35	70	39	81	107	16	-	53	1 1/4	2 1/2	1	12	1 1/2	32
WP48	90	39	81	109	18	-	73	1 1/2	2 1/2	1	12	1 1/2	32
WP50	90	39	81	109	18	-	73	1 1/2	2 1/2	1	12	1 1/2	32
WP75	89	53	86	116	22	-	69	2	4 FL	1 1/2	15	1 1/2	35
WP100	111	53	86	117	24	-	91	2	4 FL	1 1/2	15	1 1/2	35
WP125	133	53	86	116	(2) 20	54"	113	2 1/2	4 FL	1 1/2	15	1 1/2	35

All dimensions in inches; Subject to change without notice.