



Outdoor 15 PSI Low Pressure Steam Boilers Atmospheric / Natural Gas Fired

PRODUCT DESCRIPTION

Rite atmospheric gas fired low pressure steam boilers are the boiler of choice for breweries, bakeries, distilleries and building heat throughout North America.

Some of our most important features include: A broad range of sizes - from 11 to 119 horsepower. Lower water content steams faster and uses less fuel than other designs. Extra tubes in the convective section deliver dry 99% high quality steam. Whisper quiet operation (between 20-30 dBA at 3 feet). Burner has no moving parts, and can be permanently set in a few minutes with a screwdriver and a gas pressure gauge. Flame safeguard controls are microprocessor based and can support a keyboard display module. Header box expansion joint allows free movement of tubes. Heavy duty steel base and construction throughout. Document holder on side of boiler (with complete O & M Manual). Headplates are hinged for easy access and insulated to improve efficiency. 100% access to waterside surfaces = maintainable efficiency for the life of the boiler.





Outdoor Low Pressure Steam Boilers

15 PSI Models & Ratings / Atmospheric Gas Fired

STACK / DRAFT REQUIREMENTS

- UL listed for use with Type B Vent when power burner is for natural or L.P. gas fired only.
- Type 316 stainless steel lined stack is required when equipped with #2 oil or combination gas & #2 oil burner.
- Recommended stack height for natural or L.P. gas fired burners is 6 feet
- Recommended stack height for #2 oil or combination gas & #2 oil fired boilers is 10-12 ft.
- The stack should be supported independently of the boiler
- A minimally restrictive rain cap with integral down draft protection (supplied by others) is required.
- Proper draft range is between -.05" to -.09" water column.

AIR REQUIREMENTS

- Adequate Combustion/Ventilation Air is vital for safe, efficient operation. Refer to the latest edition of the Uniform Mechanical Code or consult your local Building and Safety Department for specific requirements.

ELECTRICAL REQUIREMENTS

- A 120/60/1 8 amp supply is required to boiler-burner circuit.
- Separate electrical supply may be required to operate boiler feed pump.

NATURAL GAS SUPPLY REQUIREMENTS

(STATIC AND AT FLOW)

- Models W15 S * - W76 S * 6" w.c. min. to 14" w.c. max.
- Models W85 S * - W400 S * 7" w.c. min. to 14" w.c. max.
- Models W425 S * - W500 S * 15" w.c. min. to 28" w.c. max.
- For other gas pressures, consult factory or your Rite Representative.
*Propane Supply Requirements: 11" w.c. min. to 14" w.c.

ELEVATION DERATION

Ratings given below are for elevations up to 2000 feet. Above 2000 feet, ratings should be reduced at the rate of 4% for every 1000 feet above sea level.

FEEDWATER SYSTEMS & BLOWDOWN TANKS

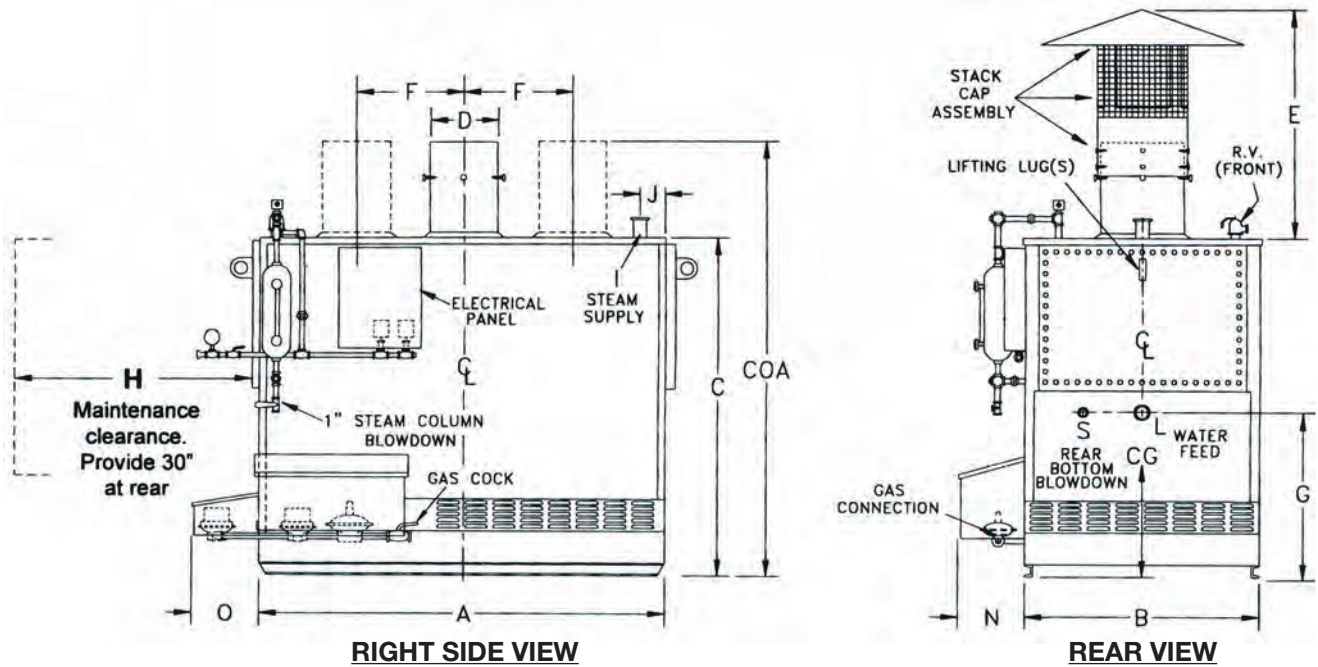
Rite manufactures a complete line of Condensate Return Feedwater Tanks and Blowdown Tanks for our Steam Boilers shown below.

BOILER MODEL	Input MBH	Nominal Output		E.D.R.	Heating Surface Sq. Ft.	Water Content Gallons	Pounds of Steam Per Hour	Nominal Shipping Weight (lbs)
		MBH	Boiler Horsepower					
W48 S	480	384	11	1600	49	35	395	1610
W55 S	550	440	13	1833	56	40	453	1670
W63 S	630	506	15	2108	63	45	519	1730
W76 S	760	608	18	2533	75	54	626	1800
W85 S	850	680	20	2833	88	61	700	2200
W90 S	900	720	21	3000	88	64	742	2200
W105 S	1050	840	25	3500	101	76	865	2400
W120 S	1200	960	28	4000	115	85	989	2600
W135 S	1350	1080	32	4500	131	97	1113	2800
W150 S	1500	1200	35	5000	145	105	1236	3000
WA150 S	1500	1200	35	5000	160	120	1236	3200
W165 S	1650	1320	39	5500	159	118	1360	3200
WA165 S	1650	1320	39	5500	168	128	1360	3400
W180 S	1800	1440	43	6000	174	130	1484	3400
WA180 S	1800	1440	43	6000	190	140	1484	3600
W200 S	2000	1600	47	6667	192	140	1649	3600
WA200 S	2000	1600	47	6667	205	150	1649	3800
W225 S	2250	1800	53	7500	230	162	1855	4000
W250 S	2500	2000	59	8333	252	180	2061	4250
W275 S	2750	2200	65	9167	273	196	2267	4500
W300 S	3000	2400	71	10000	295	215	2473	4750
W325 S	3250	2600	77	10833	318	234	2679	5000
W350 S	3500	2800	83	11667	340	251	2885	5250
W375 S	3750	3000	89	12500	362	268	3091	5500
W400 S	4000	3200	95	13333	383	287	3297	5800
W425 S	4250	3400	101	14167	405	304	3504	6100
W450 S	4500	3600	107	15000	428	322	3710	6400
W475 S	4750	3800	113	15833	450	337	3916	6700
W500 S	5000	4000	119	16667	473	352	4122	7000



Outdoor Low Pressure Steam Boilers

15 PSI Models & Dimensions / Atmospheric Gas Fired



- DIMENSIONS ARE IN INCHES - SUBJECT TO PRODUCTION TOLERANCES AND CHANGE WITHOUT NOTICE. CERTIFIED DIMENSIONS AVAILABLE UPON REQUEST.
- COA DIMENSION MAY BE LOWER FOR SHIPPING AND THE DIFFERENCE ADDED TO THE STACK CAP. E DIMENSION WILL NOT CHANGE.

BOILER MODEL	A	B	C	COA	CG	D	E	F	G	H	I	L	N	O	S
W48 S	47	26	72	89	53	9	33	0	41	32	3 FL	1 1/4	15	13	1
W55 S	52	26	72	91	53	10	35	0	41	37	3 FL	1 1/4	15	13	1
W63 S	56	26	72	91	53	10	35	0	41	42	3 FL	1 1/4	15	13	1
W76 S	64	26	72	93	53	12	38	0	41	50	3 FL	1 1/4	15	13	1
W85 S	59	32	78	99	57	12	38	0	41	29	4 FL	1 1/2	17	21	1 1/4
W90 S	59	32	78	99	57	12	38	0	41	29	4 FL	1 1/2	17	21	1 1/4
W105 S	65	32	78	101	57	14	40	0	41	35	4 FL	1 1/2	17	21	1 1/4
W120 S	71	32	78	101	57	14	40	0	41	41	4 FL	1 1/2	17	21	1 1/4
W135 S	77	32	78	104	57	16	42	0	41	47	4 FL	1 1/2	17	21	1 1/4
W150 S	83	32	78	104	57	16	42	0	41	53	4 FL	1 1/2	17	21	1 1/4
WA150 S	69	42	84	110	55	16	42	0	41	37	5 FL	2	19	23	1 1/2
W165 S	89	32	78	104	57	16	42	0	41	59	4 FL	1 1/2	17	21	1 1/4
WA165 S	73	42	84	110	55	16	42	0	41	41	5 FL	2	19	23	1 1/2
W180 S	96	32	78	99	57	(2) 12	38	18	41	65	4 FL	1 1/2	17	21	1 1/4
WA180 S	79	42	84	112	55	18	45	0	41	48	5 FL	2	19	23	1 1/2
W200 S	103	32	78	101	57	(2) 14	40	20	41	71	4 FL	1 1/2	17	21	1 1/4
WA200 S	83	42	84	114	55	20	46	0	41	52	5 FL	2	19	23	1 1/2
W225 S	87	42	84	114	55	20	46	0	41	56	5 FL	2	21	27	1 1/2
W250 S	93	42	84	114	55	20	46	0	41	62	5 FL	2	21	27	1 1/2
W275 S	99	42	84	110	55	(2) 16	42	18	41	68	5 FL	2	21	27	1 1/2
W300 S	105	42	84	110	55	(2) 16	42	19	41	74	5 FL	2	21	27	1 1/2
W325 S	111	42	84	110	55	(2) 16	42	21	41	80	5 FL	2	21	27	1 1/2
W350 S	117	42	84	112	55	(2) 18	45	23	41	86	5 FL	2	21	27	1 1/2
W375 S	123	42	84	112	55	(2) 18	45	24	41	92	5 FL	2	21	27	1 1/2
W400 S	98	51	94	122	61	(2) 18	45	19	41	63	8 FL	2	21	27	2
W425 S	103	51	94	122	61	(2) 18	45	19	41	68	8 FL	2	21	27	2
W450 S	107	51	94	124	61	(2) 20	46	21	41	72	8 FL	2	21	27	2
W475 S	111	51	94	124	61	(2) 20	46	21	41	76	8 FL	2	21	27	2
W500 S	116	51	94	124	61	(2) 20	46	22	41	81	8 FL	2	21	27	2

FL = Flanged

Rev. 2/2014