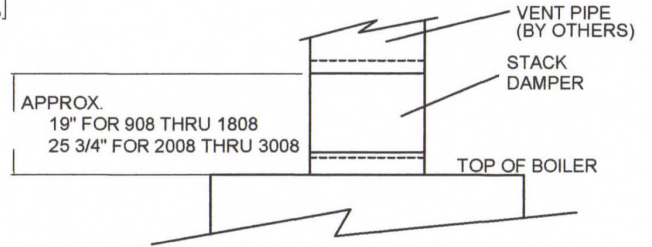
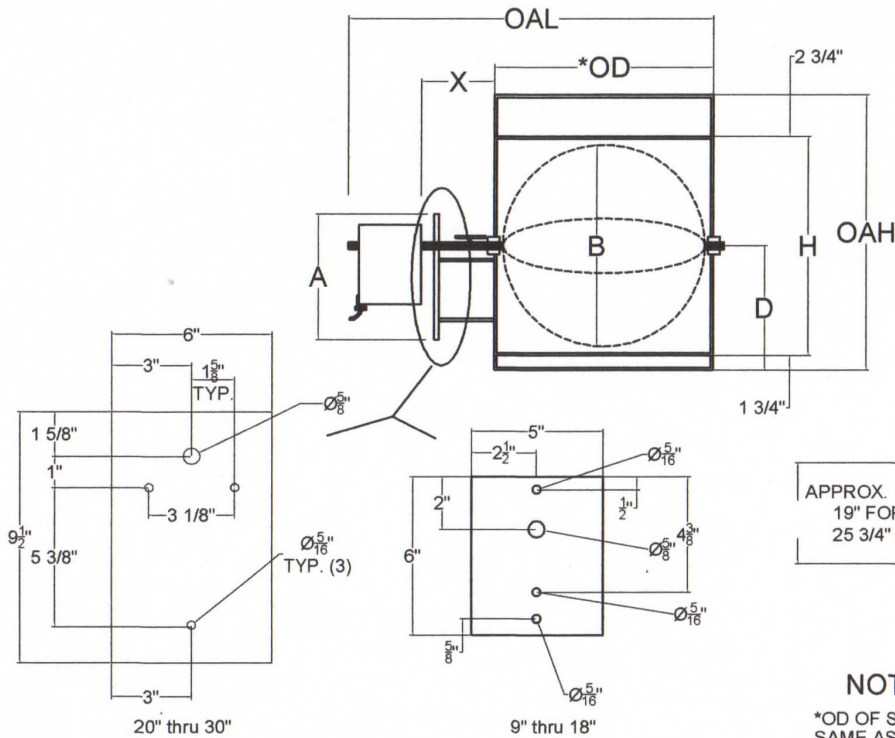




Automatic Stack Dampers



NOTE:

*OD OF SPOOL DIA. AT TOP IS:
SAME AS BOTTOM IF BAROMETRIC DAMPER IS USED.
1/8" LARGER IF DRAFT DIVERTER IS USED

MODEL	A ACTUATOR HT.	B FLAPPER DIA.	D FLAPPER c.l.	OD STACK DIA.	*OD SPOOL DIA.	H SPOOL HT.	OAH SPOOL HT.	X SHAFT LG.	OAL ASSEMBLY LG.
DAMPER 908	6"	8 3/4"	6"	9"	8 13/16"	7 1/4"	11 3/4"	3 1/2"	16 1/2"
DAMPER 1008	6"	9 3/4"	6"	10"	9 13/16"	7 1/4"	11 3/4"	3 1/2"	17 1/2"
DAMPER 1208	6"	11 3/4"	6"	12"	11 13/16"	7 1/4"	11 3/4"	3 1/2"	19 1/2"
DAMPER 1408	6"	13 3/4"	6"	14"	13 13/16"	7 1/4"	11 3/4"	3 1/2"	21 1/2"
DAMPER 1608	6"	15 3/4"	6"	16"	15 13/16"	7 1/4"	11 3/4"	3 1/2"	23 1/2"
DAMPER 1808	6"	17 3/4"	6"	18"	17 13/16"	7 1/4"	11 3/4"	3 1/2"	25 1/2"
DAMPER 2008	9 1/2"	19 3/4"	9 1/4"	20"	19 13/16"	13 1/2"	18"	4 1/8"	27 1/2"
DAMPER 2208	9 1/2"	21 3/4"	9 1/4"	22"	21 13/16"	13 1/2"	18"	4 1/8"	29 1/2"
DAMPER 2408	9 1/2"	23 3/4"	9 1/4"	24"	23 13/16"	13 1/2"	18"	4 1/8"	31 1/2"
DAMPER 2608	9 1/2"	25 3/4"	9 1/4"	26"	25 13/16"	13 1/2"	18"	4 1/8"	33 1/2"
DAMPER 2808	9 1/2"	27 3/4"	9 1/4"	28"	27 13/16"	13 1/2"	18"	4 1/8"	35 1/2"
DAMPER 3008	9 1/2"	29 3/4"	9 1/4"	30"	29 13/16"	13 1/2"	18"	4 1/8"	37 1/2"